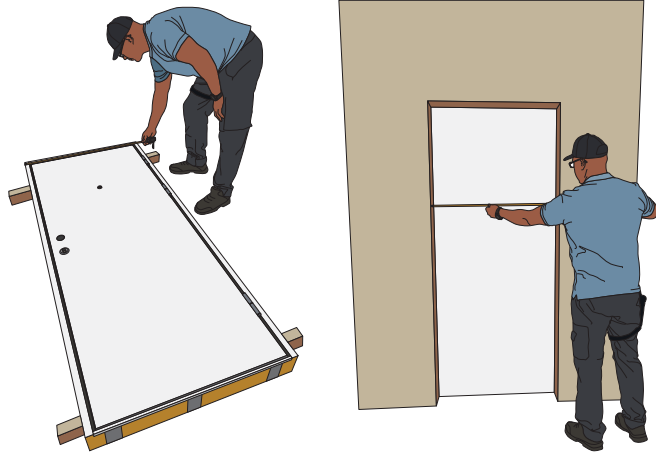




# TITANIUM INSTALLATION MANUAL



**STEP 1.** Check the door and the wall opening measurements. The gap tolerance between the wall and the frame is 10-20 mm. The door frame must fit in the wall opening to make its external plane align with the wall plane as best as possible.



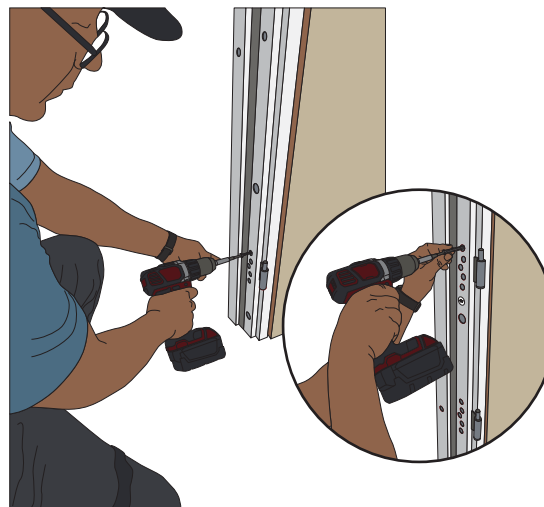
**STEP 2.** Fix the door frame in the opening using adjustable bolts or pads.



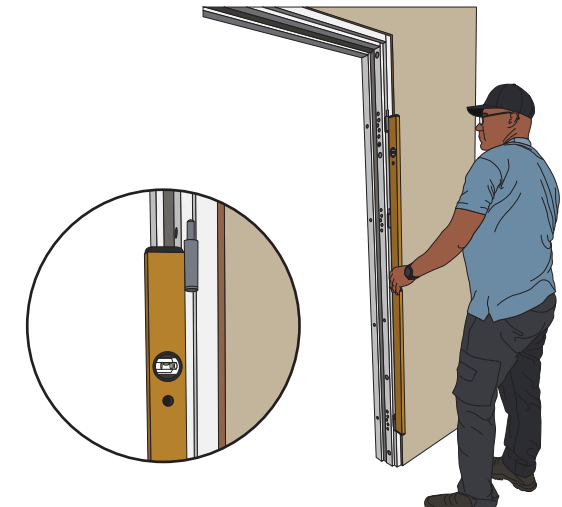
**STEP 3.** Use a level to even out the hinge side of the door frame.



**STEP 4.** Drill the wall through the adjustable hole or installation bolt points in the vertical part of the door frame. For concrete and plasterboard walls - concrete screw Ø7,5 mm L-112 mm.



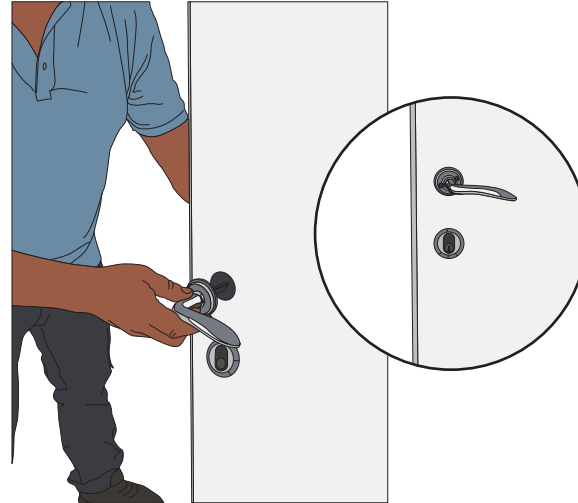
**STEP 5.** Fix the door frame (hinge side) to the wall using bolts.



**STEP 6.** Double-check the fixed door frame using a level. Do the checking on the vertical hinge side inside the door frame. Make sure that all hinges are aligned on the same axis.



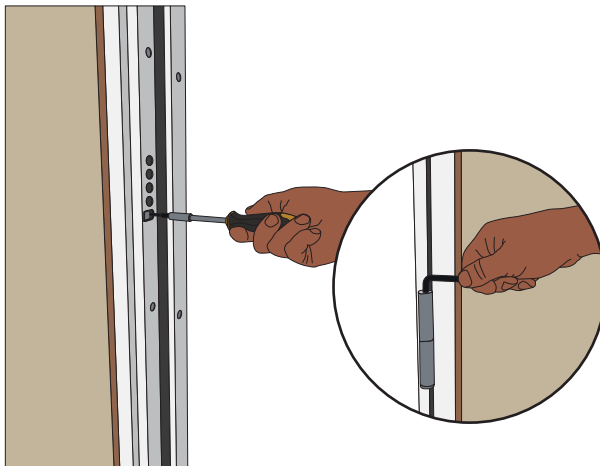
**STEP 7.** The door leaf is hanging on the hinges.



**STEP 8.** The handle, cylinder, and spinner are installed into the door leaf, and the protection of the cylinder is affixed.



**STEP 9.** Check the closing function and gap seals.



**STEP 10.** If needed make adjustments to the striking plate and hinges.



**STEP 11.** Fix the lock side of the door frame to the wall (drill the wall through the adjustable hole or installation bolt points in the vertical part of the door frame).



**STEP 12.** When both sides of the door frame are fixed in the wall opening, put the gap-appropriate pads under the middle and lock the side of the threshold.



**STEP 13.** Depending on the product specifications, the gaps between the wall and the jamb are sealed with the fire-resistant polyurethane foam "Penosil Premium Fire Rated B1" or the fire-resistant "Rockwool".